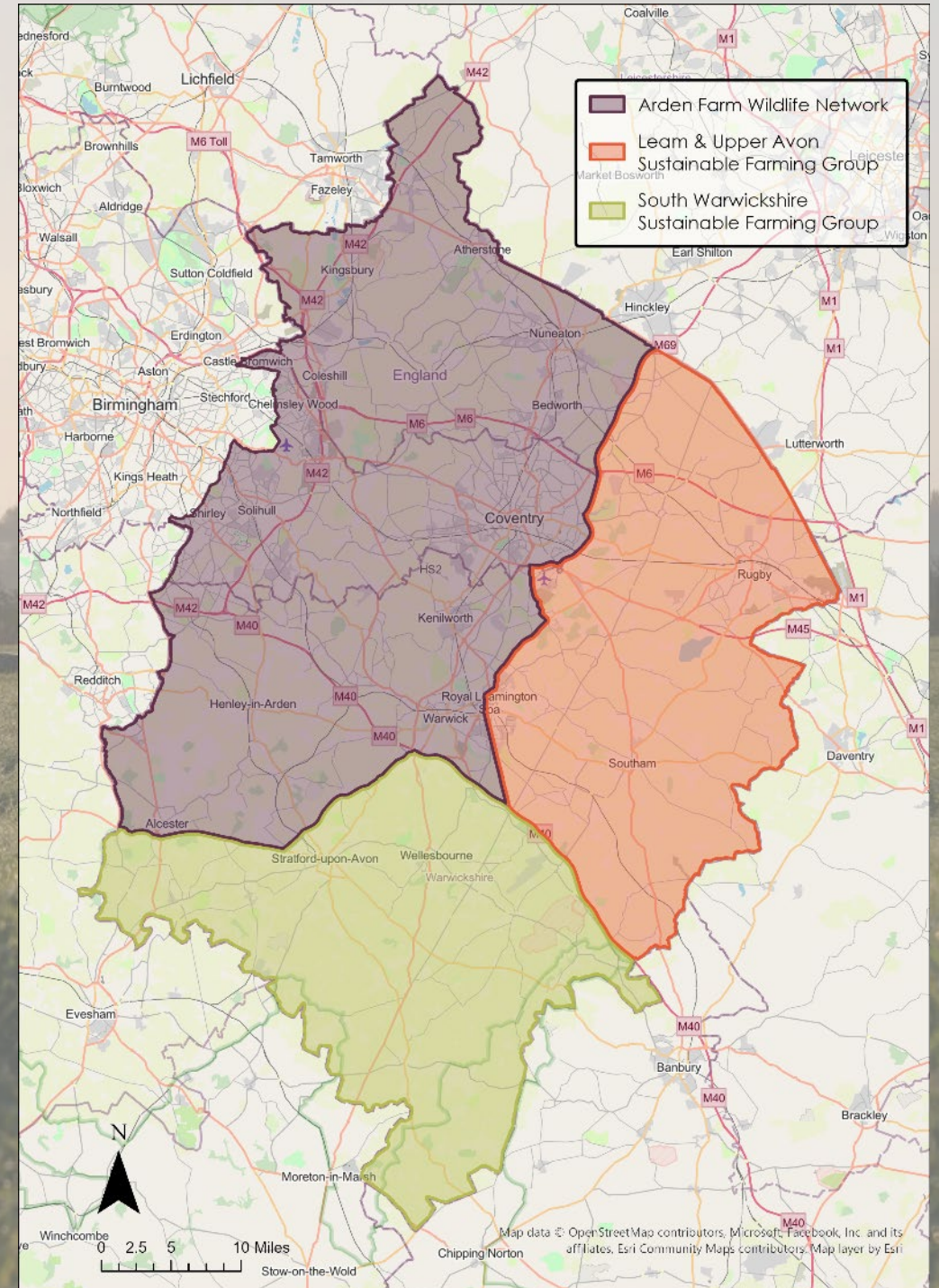




# Warwickshire's Sustainable Farming Groups

---





- Formed in 2017
- 59 member farms
- Covering 13,500 hectares



- Formed in 2021
- 34 member farms
- Covering 6600 hectares



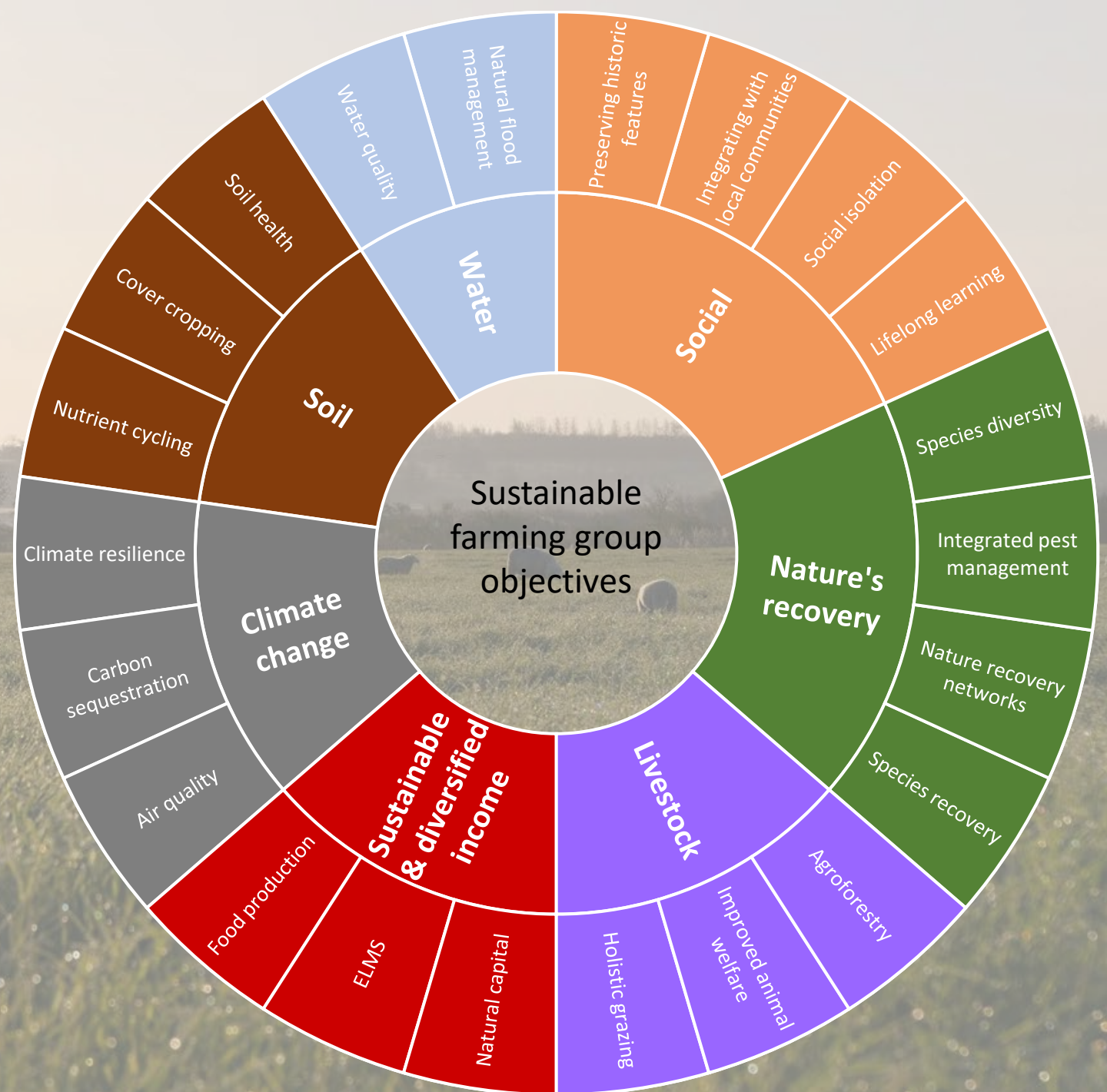
- Formed in 2021
- 60 member farms
- Covering 11,000 hectares

**Together they cover approximately 19.5% of the farmed land in Warwickshire.**

# Farmer-led learning and collaboration

Topics covered include:

- Regenerative farming principles
- Habitat management
- Wildlife ID
- Reducing run off
- Natural flood management
- Grazing and livestock management
- Agroforestry
- And many more



Mob grazing event with Andy Ruming

# Farm walks



Visit to Whittington Lodge Farm, 2022 grassland farmer of the year

Grassland ID training



Owl Pellet Dissection Workshop with Warwickshire Mammal Group



Butterfly walk and talk with Butterfly Conservation



Barn Owl Conservation with South Warwickshire Barn Owl Group



The benefits of summer catch crops with Severn Trent



Pastured pigs at Paddock Farm



Flower-rich plots and margins with Kings seeds



Rainwater harvesting with Catchment Sensitive Farming and JRH Water Management



23.5 tonnes of supplementary bird seed for feeding during the winter months

Tree sparrow villages with 120 nest boxes



20 barn owl boxes erected

Photo credit: Russel Savoury



88 hectares of wildflower meadows restored

Over 108,000 trees through Free Trees for Farmers Scheme



19 Farms surveyed for the Big Farmland Bird Count

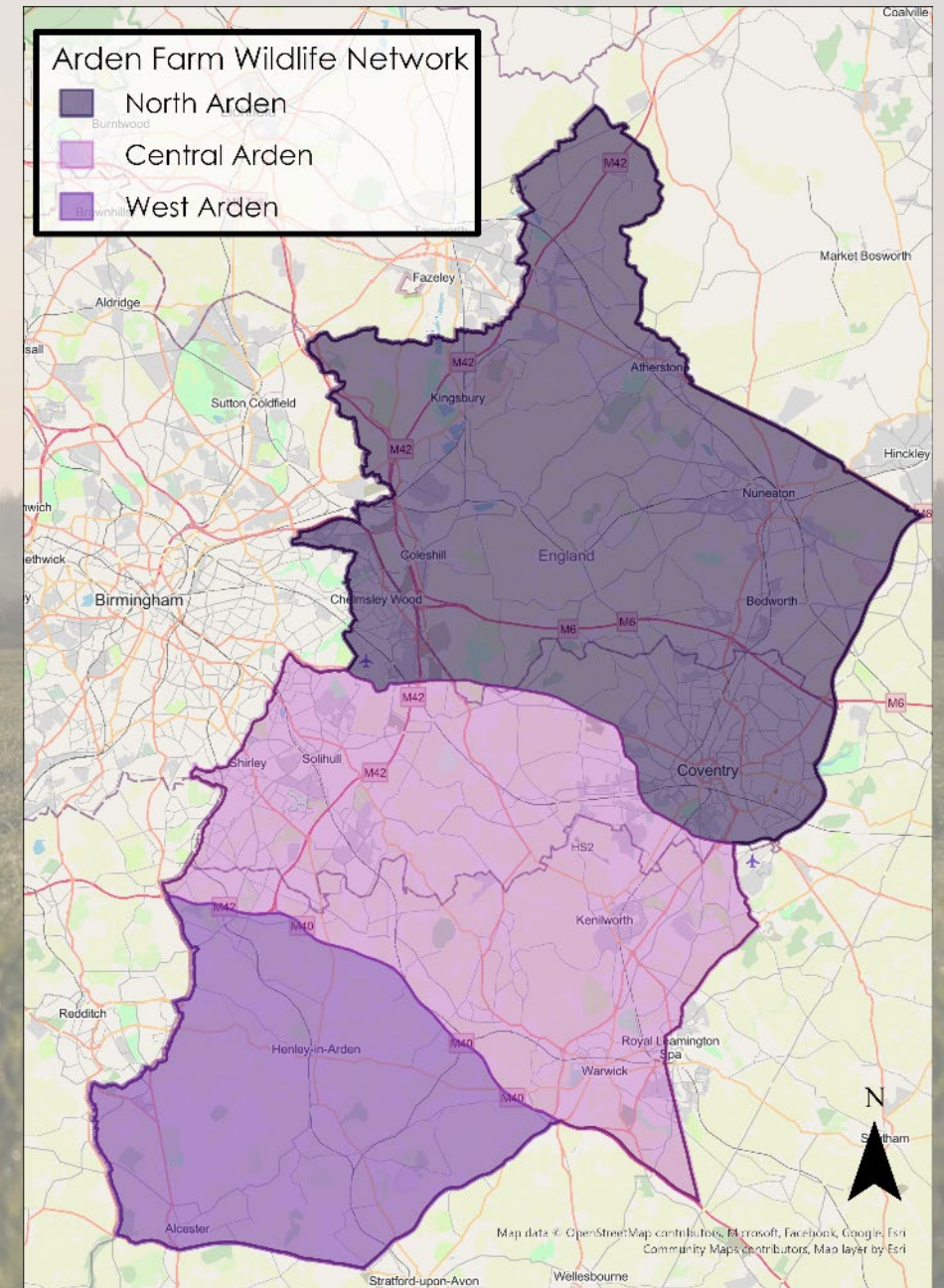


18 Farms surveyed in the Soils Alive project

# Arden Farm Wildlife Network next steps

## Priorities focus on:

- Water quality
- River corridors
- Trees in the landscape
- Hedgerows
- Soil health
- Wildflower meadows
- Ponds
- Buffer strips





Thank you for listening