

Warwickshire Coventry & Solihull LNP

Conference 2026

David Lowe – Chair



Warwickshire Coventry & Solihull
Local Nature Partnership

Why we are here...

- The State of Nature (2023) report indicates that one in six species are at risk of extinction in Britain, and since 1970, wildlife has declined by 19% on average.
- Yet nature is essential to maintain a healthy environment (e.g. air, soil and water quality) and provide us with food (e.g. pollination), and many of us value close connections with nature for well-being.

Warwickshire has 92 sites with statutory protection^{18,20,21}:

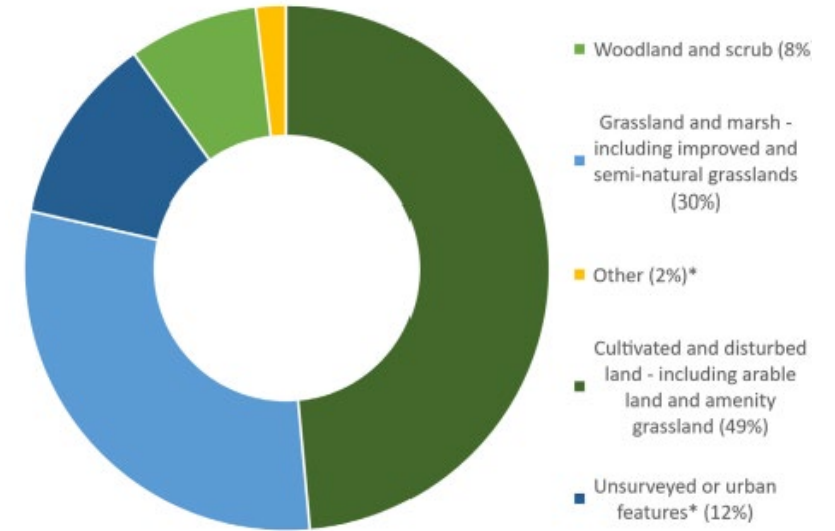
- 28 Local Nature Reserves²¹
- 63 Sites of Special Scientific Interest²⁰
- 1 Special Area of Conservation¹⁸

These statutorily protected sites account for approximately 1% of Warwickshire's land area (1633 hectares).^{5,18,20,21}

Warwickshire has 489 Local Wildlife Sites (including those with boundaries that cross into neighbouring authorities), representing 6268 hectares of land (3% of Warwickshire's total area)^{2,5}. The local authority area has an additional 1210 potential Local Wildlife Sites².

Out of these 489 Local Wildlife Sites, 237 were considered, at the time of survey, to be under good or favourable management². For the remaining sites, data are either missing or their condition would benefit from management changes.

Figure 1. Proportion of broad Phase 1 habitats across Warwickshire¹



- Plants are important for capturing carbon and mitigating climate change.
- Nature-based approaches to water management are increasingly implemented and valued.

Welcome...

Actions for today...

- Listen
- Talk
- Ask Questions
- Help
- Find out who your LNP Representative is
- Have Fun

Warwickshire Local Nature Recovery Strategy



Warwickshire Coventry & Solihull
Local Nature Partnership

David Lowe – Warks CC Service Manager: Ecology, Historic Environment & Landscape

Who is preparing the Warwickshire LNRS...



Warwickshire County Council is responsible for its production.

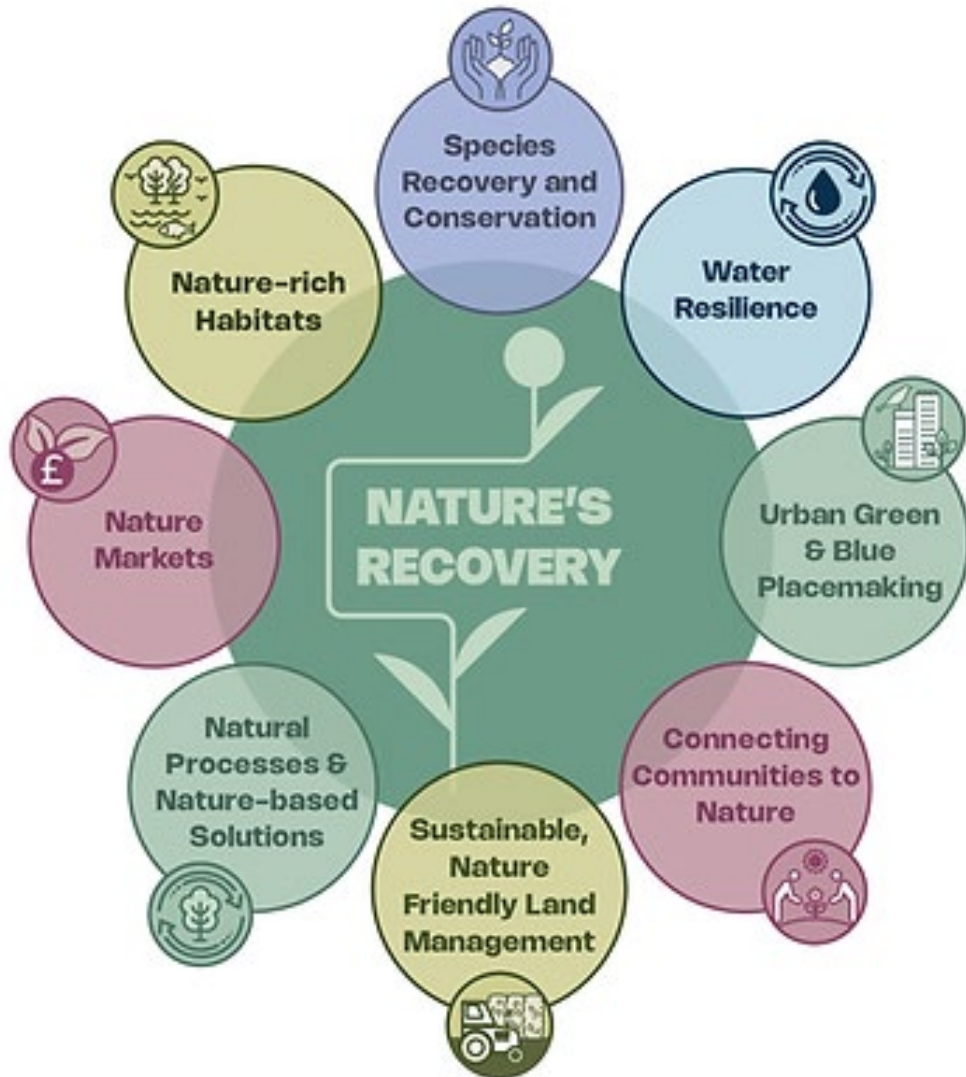


However, it is steered by the Warwickshire, Coventry and Solihull Local Nature Partnership who will be promoting and enacting the strategy.

Timeline...

- **2022:** Defra appointed Warwickshire County Council as the Provisional Responsible Authority to lead on creation of Warwickshire's LNRS.
- **April 2022:** Natural England assigned Warwickshire's Senior Advisor to support Warwickshire's LNRS creation.
- **August 2022:** The Warwickshire Coventry and Solihull Local Nature Partnership agreed to lead on the LNRS development and process.
- **October 2022:** Stakeholder analysis began (to define potential stakeholder groups and their involvement in the LNRS).
- **March 2023:** An introduction of the LNRS was presented to species specialists across Warwickshire.
- **April 2023:** The website and [social media](#) was created to raise the profile of the LNP, and provide updates on the LNRS.
- **30th June 2023:** Defra appointed Warwickshire County Council as the Responsible Authority to lead on creation of Warwickshire's LNRS.
- **November 2023:** WCS LNP held a [conference](#) to discuss the first stages of creating the LNRS, share knowledge on priorities for nature, and review the Local Biodiversity Action Plan. Feedback from the conference will be used alongside public engagement to inform the LNRS.
- The LNP and Warwickshire County Council started production of an engagement survey to gather people's views to feed into the LNRS for Warwickshire.
- **January 2024 - June 2024:** The LNP are supporting Warwickshire County Council with production and publishing of the engagement survey for the LNRS, which will gather people's views on nature to inform the LNRS for Warwickshire.
- **July 2024:** The engagement survey for the LNRS was published to allow the public to have their say on Warwickshire's nature.
- **October 2024:** Warwickshire County Council began analysis of the LNRS survey results to help develop the draft LNRS for Warwickshire.
- The LNRS Ecological Working Group and LNRS Data and GIS Working Group provided key support for development of the LNRS.
- **December 2024:** Warwickshire County Council completed analysis of the LNRS survey results which are being used to develop the draft LNRS for Warwickshire. These results can be viewed via the link at the top of this page.
- The LNP hosted a conference, attended by approximately 100 people from local and national organisations, and local communities, to input to LNRS development.
- **January 2025 - March 2025:** Engagement with stakeholders continued, to draft priority lists for species and habitats to include in the LNRS, develop maps of the LNRS area and continue to develop the LNRS.
- The LNRS Ecological Working Group and LNRS Data and GIS Working Group have been developing items for inclusion in the LNRS.
- **April - August 2025:** The draft LNRS is undergoing review and consultation by Defra, Local Authorities and Supporting Authorities.
- Once this stage of pre-consultation is complete, the LNRS draft will be published for public consultation, expected in early Autumn 2025.
- **August 19th 2025:** Natural England approval to move to Statutory Consultation phase.
- **September - October 2025:** Statutory Consultation with Targeted Workshops
- **December 2025 – March 2026: Amendments and Formal Adoption**

LNRS Themes...



The Warwickshire LNRS is built upon a set of Overarching Themes designed to guide collective efforts where everyone can take actions to conserve and enhance the natural environment and deliver the LNP Vision:

“The natural, historic, urban, and farmed environments are in a vibrant condition that enables the economy, nature and people to thrive. A place where everyone is empowered to reverse wildlife losses and create beneficial connections with nature and where nature can flourish in a stable climate.”

Priorities ...



Sustainable, Nature Friendly Land Management





Sustainable farming practices that enhance soil health and biodiversity with minimising environmental impacts is critical for Warwickshire's nature recovery. This includes increasing habitat and features for pollinators and wider farmland bird assemblages. As farming is critical to the county's economy all biodiversity priorities must be considered alongside food security, production and profitability.

Environmental farm advisors cover the whole of the county who promote and encourage the establishment of farm clusters to enable landowners to share good practice and attract significant green investment.

Priorities:

- Warwickshire will support the farm advisors to advocate good soil health, the importance of biosecurity, pollinators and other good farm and farmyard management practices, such as pollution pathway management, to support biodiversity.
- We will encourage sustainable riparian management along watercourses.
- Warwickshire will also promote the research, investment and use of new innovative technological advances that has demonstrable environmental benefits encouraging sustainable intensification alongside increased biodiversity.
- We will work with existing partnerships supporting sustainable farm practices and farmers, to enhance farmland for nature recovery.

Actions...

Priority Habitat and Themes	Potential Actions	Key Action Areas (Linked to LNRS Mapping)
<p>Grassland (Acid, Calcareous & Neutral)</p>  <p>Guidance: Grasslands</p> <p>Environment Improvement Plan Goals</p> 	<p>Encourage the conservation of existing nature-rich habitat through secured management plans and appropriate policies in spatial strategies focusing on the important grassland types to any particular area.</p> <p>Identify, create, restore, enhance and maintain nature-rich grassland prioritising those in strategic areas or would make significant contributions to nature's recovery.</p>	<p>LNRS</p> <p>Existing Acidic Grassland Existing Calcareous Grassland Existing Semi-Improved Grassland</p> <p>Existing Acidic Grassland Existing Calcareous Grassland Existing Semi-Improved Grassland Priority Grassland Creation Areas</p>
<p>Farmland & Horticulture (excluding Grassland)</p>  <p>Guidance: Farmland & Horticulture</p> <p>Environment Improvement Plan Goals</p> 	<p>Encourage nature friendly, sustainable and environmental farming practices that reduce the impacts of intensive farming and increase the biodiversity value of farmland. Actions include establishment and proactive management of nature-rich headlands, in-field trees, flora plots and pollen and nectar mixes plus reduced reliance on the use of chemicals.</p> <p>Promote best practice to create, enhance and maintain healthy soils.</p> <p>Identify, conserve and manage above and below ground archaeological and historic monuments and features (such as tythe barns, ridge and furrow and barrows) though nature-rich habitat enhancements and management practices.</p> <p>Encourage tree planting, where appropriate, to increase canopy cover in farmland including by means of 'agroforestry' or by planting small copses or trees within existing hedgerows.</p>	<p>Unmappable</p> <p>Unmappable</p> <p>Unmappable</p> <p>Priority Woodland Creation Areas</p>

Guidance...



Warwickshire Coventry & Solihull
Local Nature Partnership

[Home](#) [About](#) [LNRS](#) [Local Action Plans](#) [Resources](#) [Events](#) [Contact](#)

Search...



LNRS Guidance: Hedgerows

[< Back to LNRS Guidance menu](#)

The following LNRS Themes are taken forward within the Hedgerows priority habitat:



Nature-rich
Habitats



Species
Recovery and
Conservation



Nature Markets



Sustainable, Nature
Friendly Land
Management



Urban Green
& Blue
Placemaking



Natural Processes
& Nature-based
Solutions

Potential Actions	Key Action Areas (LNRS Map)
Encourage, create, restore, enhance and maintain species-rich hedgerows prioritising those that link existing habitat together; contain standard trees; and are managed to complement other nature benefit management objectives (such as pollinators, priority species and assemblages).	Hedgerows

Guidance and resources to support delivery of Warwickshire's LNRS

Please note resources will continue to be added as the LNRS develops.

- [Cotswolds National Landscape: Cotswold Nature Recovery Plan](#)
- [Woodland Trust: Hedgerows and hedgerow trees](#)
- [HedgeLink: Hedgerow guidance](#)

Hedgerow management

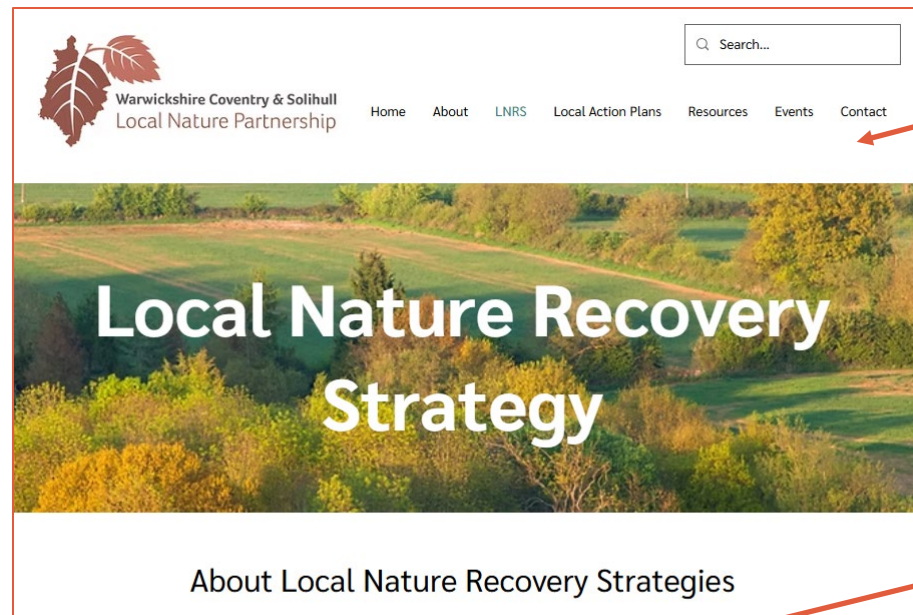
- [Wildlife Trusts: How to manage hedgerow wildlife](#)

Here you can find

- Themes you will be supporting by planting a hedge
- Potential Actions to remind you why you came here in the first place
- A list of guidance documents or other websites from where you can find help
- link to the maps

The website way in...

Guidance resource pages



The 'landing page'

The written LNRS split into four documents

The Map

<p>LNRS Guidance</p> <p>The LNRS guidance contains resources and information to support delivery of Warwickshire's Local Nature Recovery Strategy.</p> <p>LNRS Guidance</p>	<p><i>Part One</i></p> <p>Introduction to the LNRS</p> <p>A pre-consultation draft of the LNRS - introduction. A summary of Warwickshire's landscape can be found on our 'About Warwickshire' page</p> <p>View LNRS Introduction</p>	<p><i>Part Two</i></p> <p>LNRS Themes & Priorities</p> <p>A pre-consultation draft of the LNRS - Overarching Themes, Priority Habitats and Priority Species</p> <p>View LNRS Themes & Priorities</p>
<p><i>Part Three</i></p> <p>LNRS Delivery & Monitoring</p> <p>A pre-consultation draft of the LNRS - Delivery and Monitoring</p> <p>View LNRS Delivery & Monitoring</p>	<p><i>Part Four</i></p> <p>LNRS Glossary</p> <p>A pre-consultation draft of the LNRS - Glossary. Further appendices can be found on our 'resources' page</p> <p>View LNRS Glossary</p>	<p>LNRS Map</p> <p>The LNRS Habitat Map for Warwickshire</p> <p>View LNRS Map</p> <p>Coming soon: map tutorial</p>